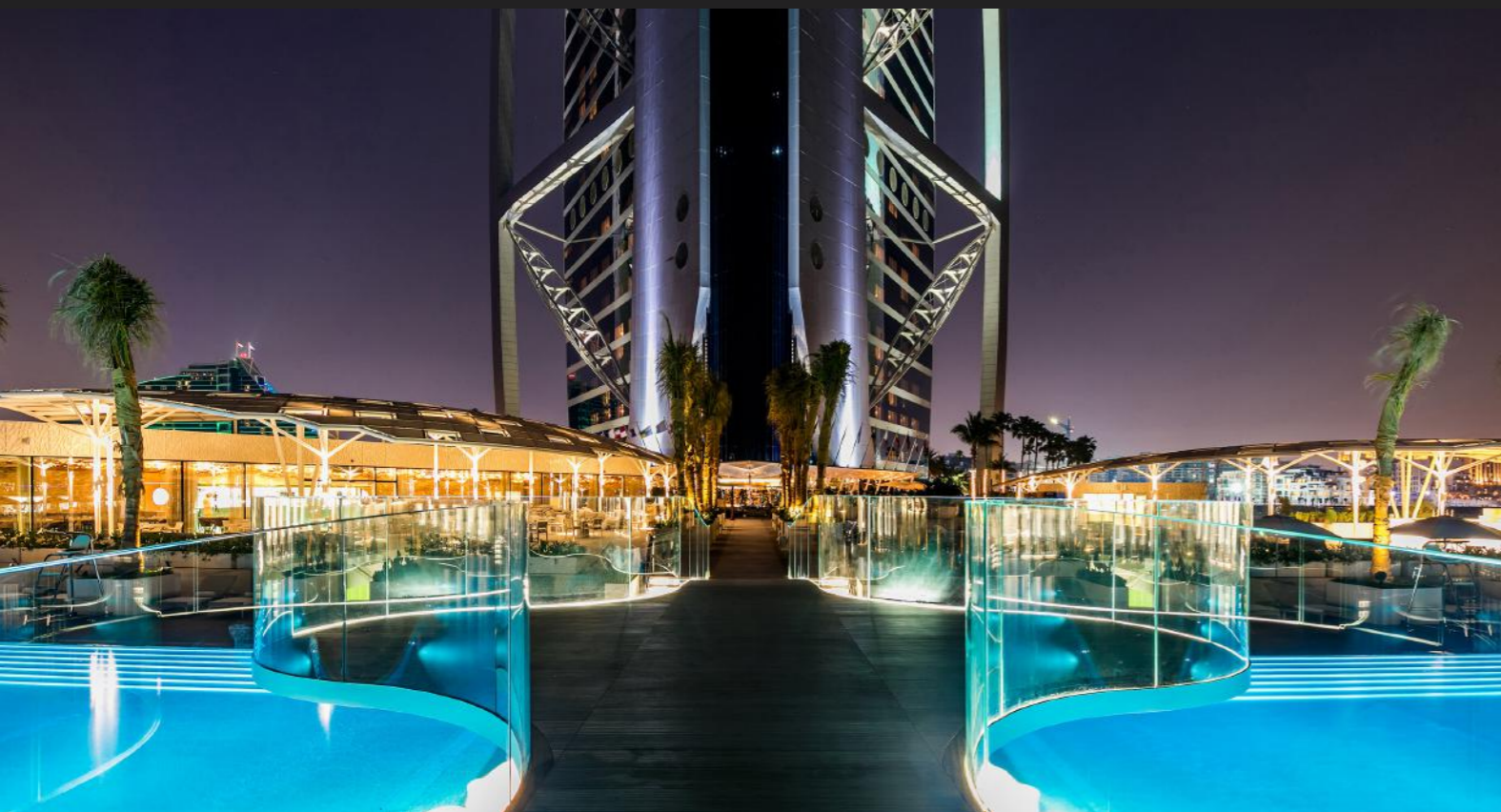


SILICONE NEON STRIP

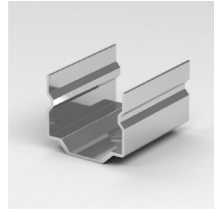
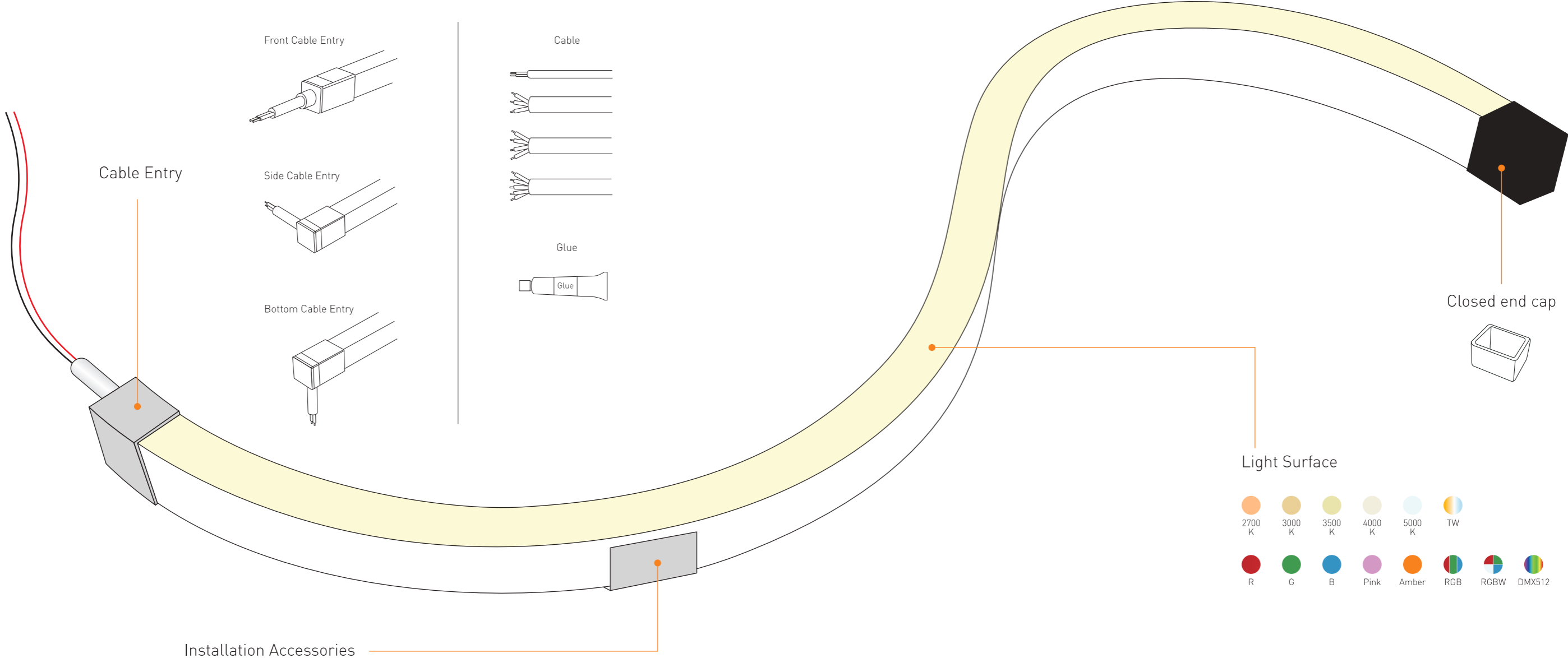
Silicone Neon Strip adopts the high light transmittance and environmental protection grade silicone gel material, with integrated extrusion molding process. And its protection grade can reach up to IP67/IP68. With excellent heat resistance, cold resistance, aging resistance, yellowing resistance, UV resistance, saltwater resistance, the outstanding feature of the material is a wide temperature range(-50 to 200 degrees).

Application

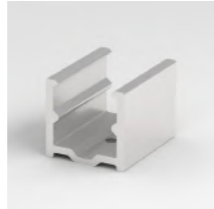


Applying to indoor and outdoor decoration, building outlines, city night, scenes illuminating and so on, like corridors, roof corners & edges, and other places for decorative lighting.

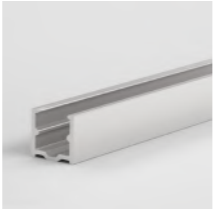
Silicone Neon Strip Solution



Stainless Steel Mounting clip



Aluminium Mounting clip



Aluminium Profile

AL-NEON1212 IP67

IP67 FLEX LED NEON 1212, Top Bend, DC24V. Cross section size 12mm x 12mm(W x H), which is vertical bending with diameter of 150mm. It is IP67 protected, UV resistant, solvents resistant and saltwater resistant. Dot free will bring the most excellent performance for indoor & outdoor applications.



Single color (Lm/m)

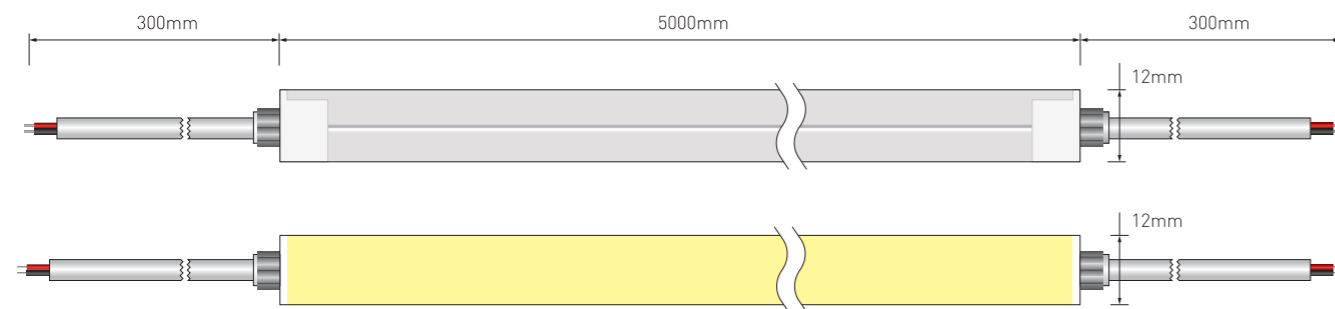
Power	CCT	2700±100	3000±100	3500±200	4000±300	5000±300	Max. Run Length	Unit Cut
5W/M		349	329	355	347	347	19M	50mm
10W/M		668	639	662	677	682	13M	50mm

Power	CCT	R	G	B	Amber	Pink	Max. Run Length	Unit Cut
5W/M		132	374	70	28	143	19M [R/A:25M]	50mm
10W/M		277	703	129	51	278	13M[R/A:17M]	50mm

Note: -The running length is base on Constant Current 24Vdc LED Strip.

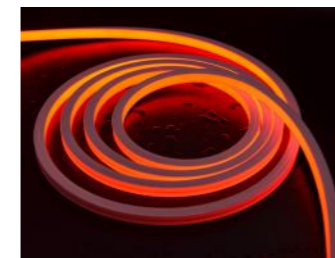
-When use the solder free end cap or waterproof connector, the max run length of 5W/M, 10W/M is respectively 24M, 12M.

Dimension



CCT Tunable (Lm/m)

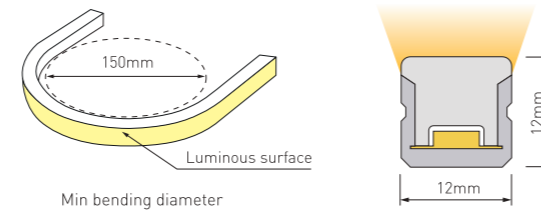
Power	CCT	2700K	6000K	2700K + 6000K	Max. Run Length	Unit Cut
5W/M		151	161	316	5M	50mm
10W/M		315	336	646	5M	50mm



RGB (Lm/m)

Power	CCT	R	G	B	RGB	Max. Run Length	Unit Cut
5W/M		34	111	20	174	5M	50mm
10W/M		69	214	40	288	5M	50mm

Technical Data	
Working Voltage	DC24V
CRI	>90
Rated Power/m	5w/10w
Storage Temperature	-25 C ~60 C
Ambient Temperature	T _{min} =-25 C, T _{max} [Table below]



LEDNEON 1212	Low Output	STD output
Power[W/m]	5W	10W
Max. Ambient tempt.(T _{max})	55 C	45 C

Note:

- When ambient temperature reaches 55°C, the power is suggested to be 5W/M.
- Max. run length refers to single side feed in serial connection.
- The given data are typical values due to the tolerances of the production process and the electrical components, values for light output and electrical power can vary up to 10%.
- The given color temperature is the temperature of finished product.

3-Step MacAdam

UV Protection

Resistant to solvents

IP67

Waterproof Grade

LM80

LM80 Standard

Resistant Saltwater

Cable Entry

Front Cable Entry:
The cable could be hidden in all directions by the flexible design.

Integral End Cap



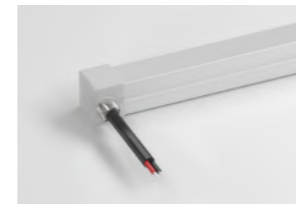
Solder Free End Cap



Silicone end cap



Side Cable Entry:
The cable could be perfectly hidden to achieve seamless light connection.

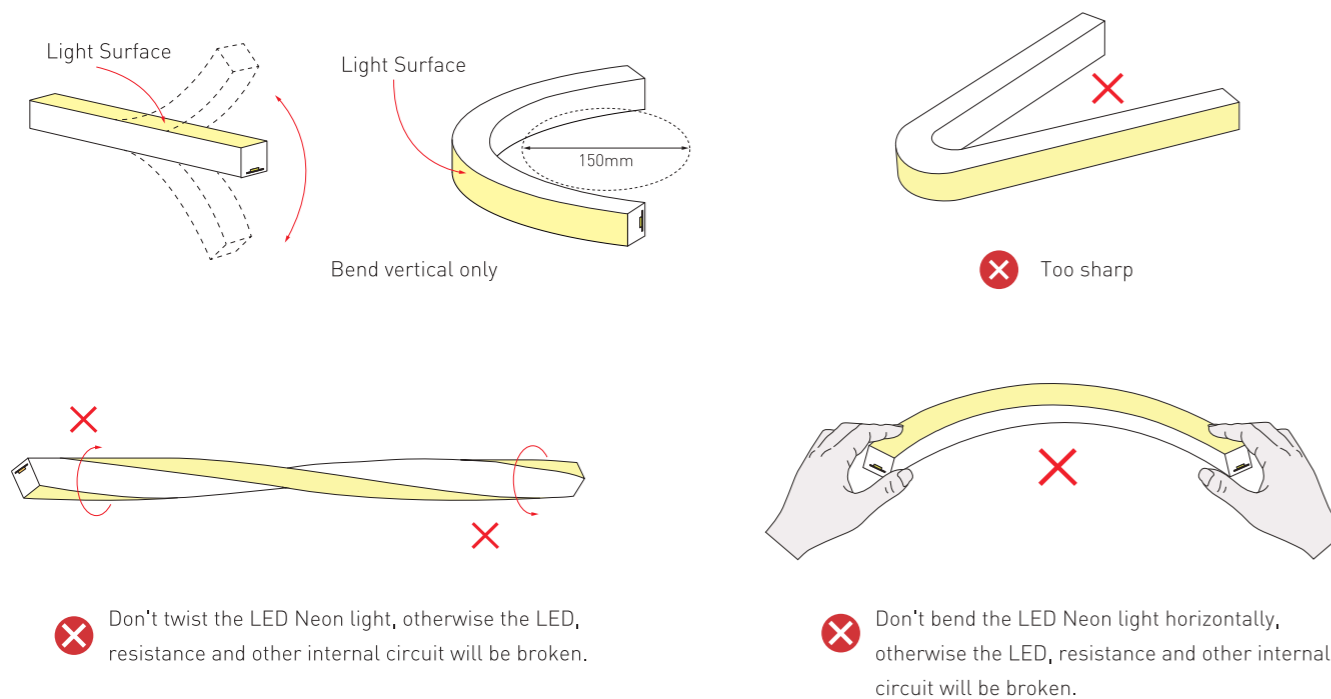


Bottom Cable Entry:
The cable could be perfectly hidden to achieve seamless light connection.



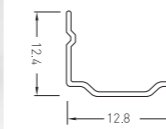
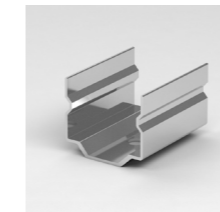
Operation Guidance

The LED neon strip can be only bend along the light surface, like the following drawing;
Don't twist the light, and don't bend smaller than the allowed minimum 150mm bending diameter;



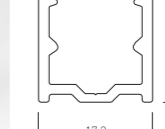
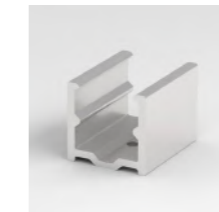
Accessories

Stainless Steel Mounting clips



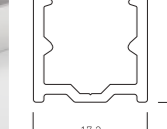
Dimension:
20x12.8x12.4mm

Aluminium Mounting clips



Dimension:
20x17.3x14

Aluminium Profile



Dimension:
1000x17.3x14



PVC Cable
2PIN, 3PIN, 4PIN
Color: Black



IP67 Connector 4PIN
Wire Gauge: 0.5mm²/22AWG
Color: Black



Silicone Cable
2PIN, 3PIN, 4PIN
Color: White



Anti-rain connector



Silicone closed end cap
Dimension: 13x14.5x14.5mm
Color: Semi-Transparent



PC closed end cap
Dimension: 26.5x17x16mm
Material: stainless steel
Color: Transparent



Scissor
Material: stainless steel

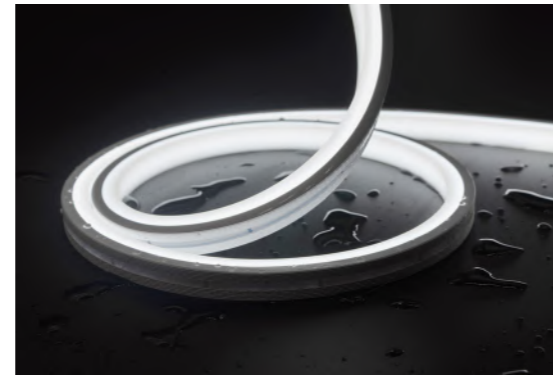
Ordering Code

Category	LED Type	Voltage	CRI	CCT	Laser code	Plug way	Entry Cable	Wire Length								
Silicone	S	24v	Ra>90	C9	2700K	27	PINK	P	Customized	C	Combined end cap	01	Dual-ends	D	12cm	12
					3000K	30	AMBER	A	Shinesky	S	Silicone end cap	02	One end	S	20cm	20
					3500K	35	RGB	RGB	Neutral	N	Integral plug	03	No	X	30cm	30
					4000K	40									50cm	50
					5000K	50									
					Tunable	TW										
					R	R										
					G	G										
					B	B										
					S	1212	24	C9								

AL-NEON1010 IP67

"IP67 Three sided FLEX LED NEON 1010, Top Bend, DC24V. Cross section size 10mm x 10mm(W x H), which is vertical bending with diameter of 100mm. It is IP67 protected, UV resistant, solvents resistant and saltwater resistant.

Dot free will bring the most excellent performance for indoor & outdoor applications."

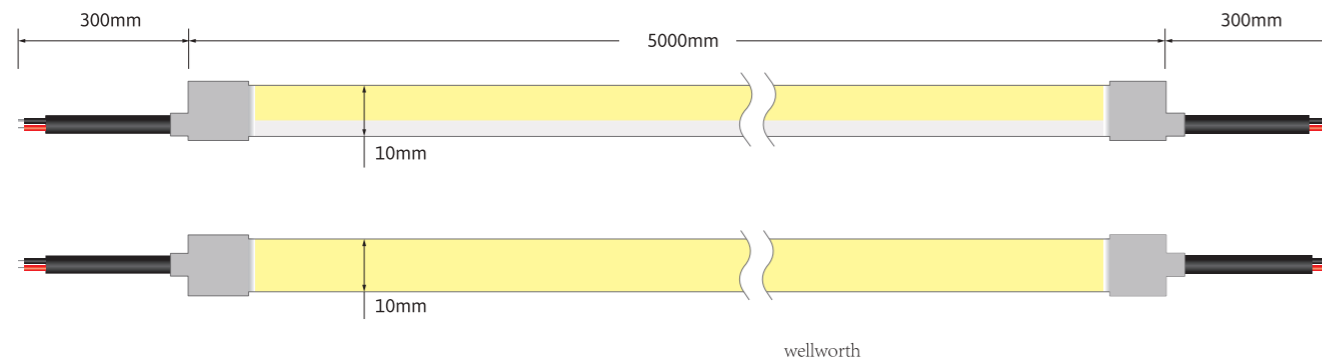


Single color (Lm/m)

Power	CCT	2700±100	3000±100	3500±200	4000±300	5000±300	Max. Run Length	Unit Cut
5W/M		380	402	371	429	427	5M	35.7mm
10W/M		738	786	718	829	827	5M	35.7mm

Power	CCT	R	G	B	Amber	Pink	Max. Run Length	Unit Cut
5W/M		154	513	93.9	127	179	5M	35.7mm
10W/M		331	921	174	268	348	5M	35.7mm

Dimension

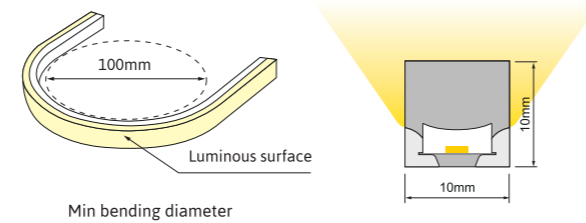


Technical Data	
Working Voltage	DC24V
CRI	>90
Rated Power/m	5w/10w
Storage Temperature	-25 C ~60 C
Ambient Temperature	T _{min} =-25 C, T _{max} (Table below)

LEDNEON 1010	Low Output	Std Output
Power(W/m)	5W	10W
Max. Ambient tempt.(T _{max})	55 C	45 C

Note:

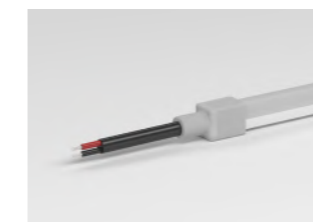
- Max. run length refers to single side feed in serial connection.
- The given data are typical values due to the tolerances of the production process and the electrical components, values for light output and electrical power can vary up to 10%.
- The given color temperature is the temperature of finished product.



3-Step MacAdam	UV Protection	Resistant to solvents
IP67 Waterproof Grade	LM80 LM80 Standard	Resistant Saltwater

Cable Entry

Silicone end cap



Front Cable Entry



Side Cable Entry



Bottom Cable Entry

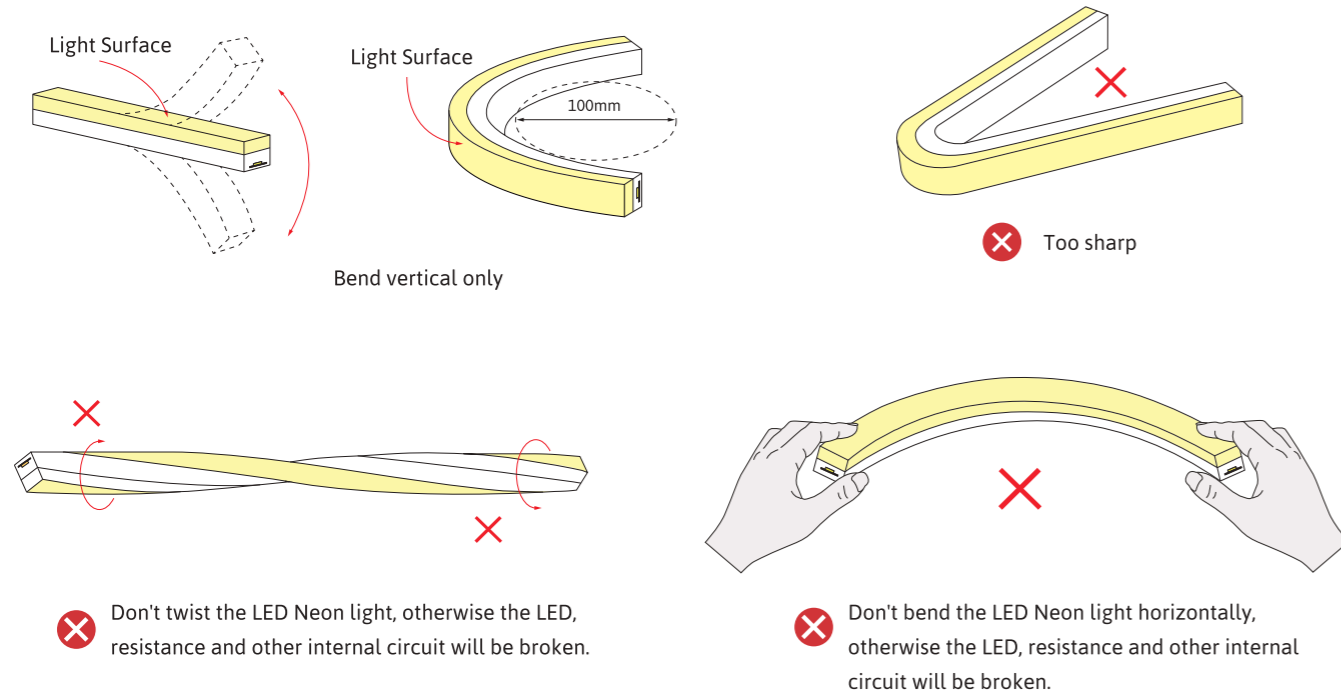
Integral End Cap



Front Cable Entry

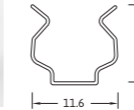
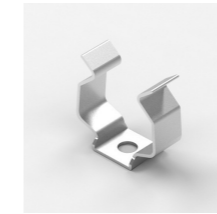
Operation Guidance

The LED neon Flex can be only bend along the light surface, like the following drawing;
Don't twist the light, and don't bend smaller than the allowed minimum 100mm bending diameter;



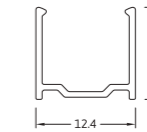
Accessories

Stainless Steel Mounting clip



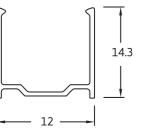
Dimension:
12x11.6x7.6mm(L x W x H)

Aluminium Profile



Dimension:
1000x12.4x13mm(L x W x H)

transparent plastic groove



Dimension:
1000x12x14.3mm(L x W x H)



PVC Cable
2PIN
Color: Black



Silicone closed end cap
Dimension: 12x12mm (WxH)
Color: Semi-Transparent



Scissor
Material: stainless steel

Ordering Code

Category	LED Type	Voltage	CRI	CCT	Laser code	Plug way	Entry Cable	Wire Length																				
Silicone	S	1010	1010	24v	24	Ra>90	C9	2700K	27	PINK	P	Customized	C	Combined end cap	01	Dual-ends	D	12cm	12									
								3000K	30	AMBER	A	Shinesky	S	Silicone end cap	02	One end	S	20cm	20									
								3500K	35	RGB	RGB	Neutral	N	Integral plug	03	No	X	30cm	30									
								4000K	40									50cm	50									
								5000K	50																			
								Tunable	TW																			
								R	R																			
								G	G																			
								B	B																			
								S		1010		24		C9														

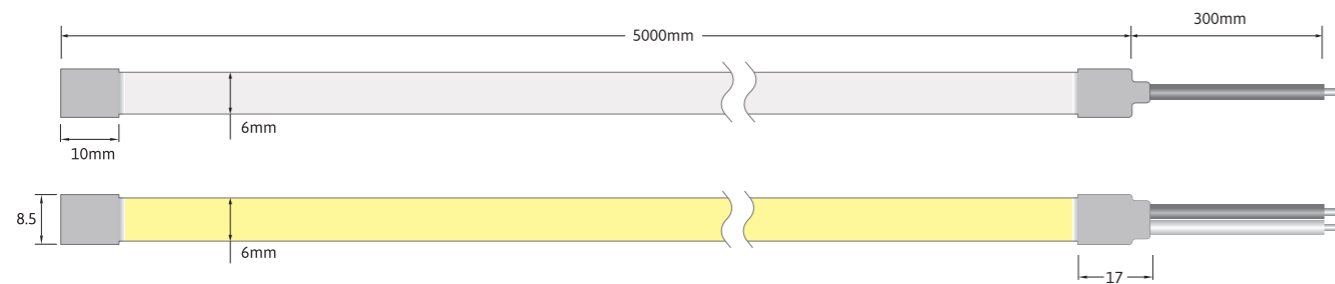
AL-NEON0606 IP67

Top bend, DC24V. Cross section size 6mm x 6mm(W x H), which is vertical bending with diameter of 50mm.

It is IP67 protected, UV resistant, solvents resistant and saltwater resistant. Dot free will bring the most excellent performance for indoor & outdoor applications.



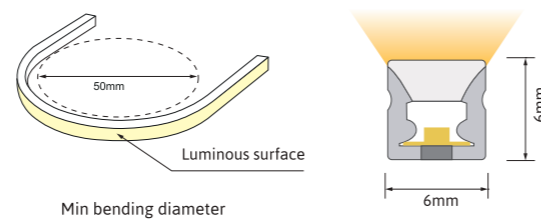
Dimension



Technical Data	
Working Voltage	DC24V
CRI	>90
Rated Power/m	6W
Storage Temperature	-25 C ~60 C
Ambient Temperature	T _{min} =-25 C, T _{max} (Table below)

LEDNEON 0606	Low Output
Power(W/m)	6W
Max. Ambient tempt.(T _{max})	55 C

- Note:
- Max. run length refers to single side feed in serial connection.
 - The given data are typical values due to the tolerances of the production process and the electrical components, values for light output and electrical power can vary up to 10%.
 - The given color temperature is the temperature of finished product.



3-Step MacAdam	UV Protection	Resistant to solvents
IP67 Waterproof Grade	LM80 LM80 Standard	Resistant Saltwater

Single color (Lm/m)

CCT	2400±100	2800±100	3200±200	3800±300	4400±300	Max. Run Length	Unit Cut
Power	330	345	348	358	353	5M	25mm

The above color temperature is the finished-product color temperature.

Cable Entry

Silicone end cap



Front Cable Entry
The cable could be hidden in all directions by the flexible design.

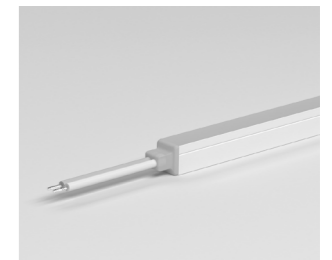


Side Cable Entry
The cable could be perfectly hidden to achieve seamless.



Bottom Cable Entry
The cable could be perfectly hidden to achieve seamless.

Integral End Cap



Front Cable Entry
The cable could be hidden in all directions by the flexible design.

Operation Guidance

The LED neon Flex can be only bend along the light surface, like the following drawing; Don't twist the light, and don't bend smaller than the allowed minimum 50mm bending diameter;

Light Surface
Bend vertical only

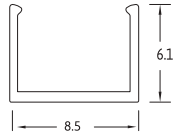
Too sharp

Don't twist the LED Neon light, otherwise the LED, resistance and other internal circuit will be broken.

Don't bend the LED Neon light horizontally, otherwise the LED, resistance and other internal circuit will be broken.

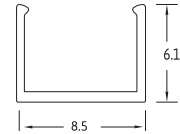
Accessories

Aluminium Mounting clips



Dimension:
15x8.5x6.1mm (L x W x H)

Aluminium Profile



Dimension:
1000x8.5x7.2mm (L x W x H)



2 PIN grey/white wire

Silicone closed end cap
Dimension: 10x8.5x8.5mm (LxWxH)
Color: Semi-Transparent



Scissor
Material: stainless steel

Ordering Code

Category	LED Type		Voltage		CRI		CCT		Laser code		Plug way		Entry Cable		Wire Length		
Silicone	S	0606	0606	24v	24	Ra>90	C9	2400K	24	Customized	C	Combined end cap	01	Dual-ends	D	12cm	12
								2800K	28	Shinesky	S	Silicone end cap	02	One end	S	20cm	20
								3200K	32	Neutral	N	Integral plug	03	No	X	30cm	30
								3800K	38			50cm	50				
								4400K	44							
S	0606	24	C9	32	N	01	X	30	30								